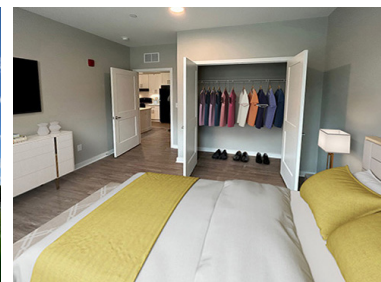




Residences at Harper



Moorestown, New Jersey

One-, Two- & Three-Bedroom Apartments

Residences at Harper is a brand new 76-unit family housing development in Moorestown, NJ. The building is comprised of 14 one-bedroom units, 42 two-bedroom units, and 19 three-bedroom units. 100% of the units will be affordable to residents with household incomes at or below 60% of the Area Median Income (AMI) for Burlington County. Moorestown has Burlington County's top school system and the state's 10th-best overall, according to Niche's 2024 Best Schools and Districts.

COMMUNITY AMENITIES:

- Inviting community room
- Elevatored building
- Fitness center
- Playground
- Laundry room
- Professionally landscaped grounds
- On-site professional management team, supportive services and service-oriented maintenance with 24-hour emergency call service

RESIDENCE FEATURES:

- Modern kitchen including pendant lighting and dishwasher
- Luxury hard surface flooring
- Spacious closets
- Keyless entry
- Central A/C
- Resident is responsible for electric (heating, cooling, hot water) and cable.

APPLY ONLINE HERE!



Contact Us:

harper-apartments@prontohousing.io | 856-531-1376
www.ResatHarper.com

*Income Restrictions Apply

PENNROSE
Bricks & Mortar | Heart & Soul



PROGRAMS AND ELIGIBILITY

Program requirements are specific to the property and individual unit. Eligibility for programs depends on several factors including: the number of people in the household, the total annual household income, credit and criminal background screening, and other criteria. Residences at Harper offers the following rent programs: Low-Income Housing Tax Credit

INCOME LIMITATIONS & RENTS

(Effective 4/2025 and subject to change)

Unit Size	Household Size	Qualifying Household Income Range	% AMI	Monthly Rent
1 Bedroom	1 person	\$35,794- \$41,800	50%	\$1,044
	2 people	\$35,794- \$47,800		
	1 person	\$43,474- \$50,160	60%	\$1,268
	2 people	\$43,474- \$57,360		
2 Bedroom	2 people	\$42,823- \$47,800	50%	\$1,249
	3 people	\$42,823- \$53,750		
	4 people	\$42,823- \$59,700		
	2 people	\$52,046- \$57,360	60%	\$1,518
	3 people	\$52,046- \$64,500		
	4 person	\$52,046- \$71,640		
3 Bedroom	3 people	\$49,337- \$53,750	50%	\$1,439
	4 people	\$49,337- \$59,700		
	5 people	\$49,337- \$64,500		
	6 people	\$49,337- \$69,300		
	3 people	\$60,000- \$64,500	60%	\$1,750
	4 people	\$60,000- \$71,640		
	5 people	\$60,000- \$77,400		
	6 people	\$60,000- \$83,160		