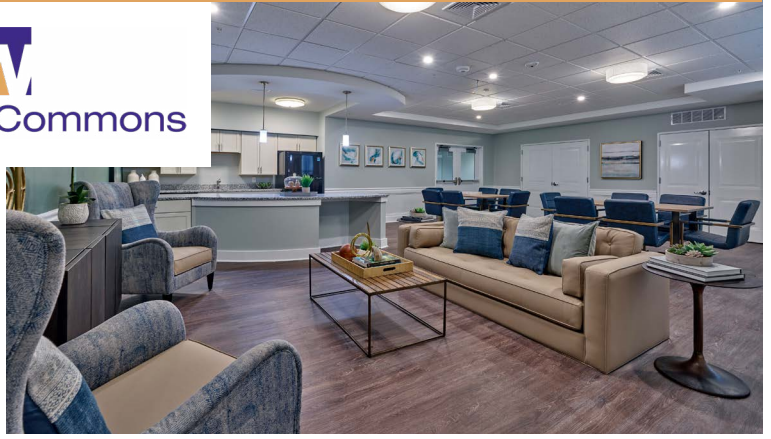


**MOVE INTO PHASE II BY 2/28 & GET MARCH FREE!**



## Cherry Hill, New Jersey

### One & Two-Bedroom Apartment Homes

Weinberg Commons is a brand new 55+ rental community in Cherry Hill, NJ. The two-phase development features one-bedroom and two-bedroom apartment homes. Several apartments in each phase have been designated for people with developmental disabilities in the form of special needs suites. All other apartments are for adults 55 and older. All residents have access to on-site supportive services. Weinberg Commons has been developed in partnership with the Jewish Federation of Southern New Jersey.

#### COMMUNITY AMENITIES:

- Inviting resident lounge
- On-site laundry facilities
- Fitness center
- Computer lab
- Professionally landscaped grounds
- On-site professional management team
- Service-oriented maintenance with 24-hour emergency call service
- All prospective new residents receive in depth and standardized credit, criminal, and landlord background screening through a third-party reporting agency.

#### RESIDENCE FEATURES:

- Modern kitchen including electric range, dishwasher
- Spacious closets
- Carpeted bedrooms, vinyl living areas
- Ceramic-tiled baths
- Central A/C
- Pet-friendly (restrictions apply)
- Resident is responsible for gas, electric, and cable.

 **We are a smoke-free community!**

#### Contact Us:

1711 Springdale Rd | Cherry Hill, NJ 08003  
T: 856.317.6374 | F: 609.482.8588 | TDD: 800.545.1833 x648  
E: WeinbergCommons@Pennrose.com  
WeinbergCommons.com

\*Income Restrictions Apply

## PROGRAMS AND ELIGIBILITY

Program requirements are specific to the property and individual unit. Eligibility for programs depends on several factors including: the number of people in the household, the total annual household income, credit and criminal background screening, and other criteria. Weinberg Commons offers the following rent programs: Low-Income Housing Tax Credit, HOME Program

## HOW TO APPLY

Complete the property Pre-application that is available on WeinbergCommons.com. Paper copies of the Pre-application can be picked up from the brochure box outside the entrance to Weinberg Commons I located at 1711 Springdale Rd, Cherry Hill, NJ 08003.

Return the completed, signed, and dated Pre-application via US MAIL to: Weinberg Commons II, Attn: Property Manager, 1711 Springdale Rd, Cherry Hill, NJ 08003. Please include a \$25 money order for each adult (including live-in aide) payable to: Weinberg Commons II.

If there is an available unit that your household qualifies for, you will be contacted to schedule an application interview. Please plan to bring the following:

- Social Security Card(s) for each household member.
- Original Birth Certificate(s) for each household member.
- Addresses of your employer, bank, Social Security Office, and all other information pertaining to income.

If there are no units currently available that your household qualifies for, you will be mailed a Confirmation of Pre-application via U.S. Mail and placed on the property's waiting list. You will be contacted when a unit that your household qualifies for becomes available. Upon payment of the Application Fee, credit, criminal, and landlord screening will be processed.

## PHASE II INCOME LIMITATIONS & RENTS

(Effective 8/20 and subject to change)

Unit Size	Household Size	Qualifying Household Income Range	% AMI	Monthly Rent
1 Bedroom	1 person	\$30,480 - \$40,620	60%	\$1,016
	2 people	\$30,480 - \$46,380		
2 Bedroom	1 person	\$36,840 - \$40,620	60%	\$1,228
	2 people	\$36,840 - \$46,380		
	3 people	\$36,840 - \$52,200		
	4 people	\$36,840 - \$57,960		