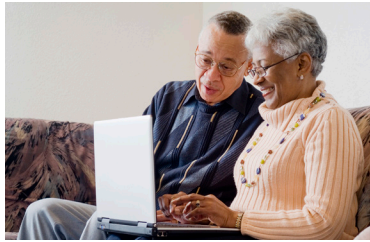




# State Street Crossing



## York, Pennsylvania

### One-, Two-, Three-, & Four-Bedroom Apartments & Townhomes

We are now accepting Pre-applications! State Street Crossing is a brand new family rental community in York, PA. The 56-unit development features one-, two-, three-, and four-bedroom apartment homes and townhomes. Apartments are affordable at a variety of income tiers, and include a modern kitchen with dishwasher and a washer and dryer in every home. Residents enjoy an inviting community building, playground, and abundant green space.

#### COMMUNITY AMENITIES:

- Inviting community building
- On-site playground
- Community centered around large green space
- Professionally landscaped grounds
- On-site professional management team and service-oriented maintenance with 24-hour emergency call service
- All prospective new residents receive in depth and standardized credit, criminal, and landlord background screening through a third-party reporting agency.

#### RESIDENCE FEATURES:

- Modern kitchen including electric range, dishwasher
- Washer and dryer in every home
- Spacious closets
- Vinyl flooring
- Ceramic-tiled baths
- Central A/C
- Pet-friendly (restrictions apply)
- Resident is responsible for electric and cable.

#### Contact Us:

380 North State Street | York, PA 17403  
 T: 717.306.9550 | F: 717.779.1564 | TDD: 800.545.1833 x648  
 E: StateStreet@Pennrose.com  
 StateStreetCrossing.com

## PROGRAMS AND ELIGIBILITY

Program requirements are specific to the property and individual unit. Eligibility for programs depends on several factors including: the number of people in the household, the total annual household income, credit and criminal background screening, and other criteria. State Street Crossing offers the following rent programs: Low-Income Housing Tax Credit, HOME Program

## HOW TO APPLY

Complete the property Pre-application, available on the website. Please contact the office if you would like a Pre-application emailed or mailed to you.

Return the completed, signed, and dated Pre-application via US MAIL to: **State Street Crossing, Mgmt Office, 380 North State Street, York, PA, 17403**. Please include a \$25 money order for each adult payable to: State Street Crossing.

If there is an available unit that your household qualifies for, you will be contacted to schedule an application interview. Please plan to bring the following:

- Social Security Card(s) for each household member.
- Original Birth Certificate(s) for each household member.
- Addresses of your employer, bank, Social Security Office, and all other information pertaining to income.

If there are no units currently available that your household qualifies for, you will be mailed a Confirmation of Pre-application via U.S. Mail and placed on the property's waiting list. You will be contacted when a unit that your household qualifies for becomes available.

Upon payment of the Application Fee, credit, criminal, and landlord screening will be processed.

## INCOME LIMITATIONS & RENTS

(Effective 1/21 and subject to change)

Unit Size	Household Size	Qualifying Household Income Range	% AMI	Monthly Rent
1 Bedroom	1 person	\$29,246 - \$34,560	60%	\$853
	2 people	\$29,246 - \$39,480		
2 Bedroom	2 people	\$35,246 - \$39,480	60%	\$891 - \$1,028
	3 people	\$35,246 - \$44,400		
	4 people	\$35,246 - \$49,320		
3 Bedroom	3 people	\$40,594 - \$44,400	60%	\$1,132 - \$1,184
	4 people	\$40,594 - \$49,320		
	5 people	\$40,594 - \$53,280		
	6 people	\$40,594 - \$57,240		
4 Bedroom	4 people	\$37,097 - \$41,100	50%	\$1,048 - \$1,082
	5 people	\$37,097 - \$44,400		
	6 people	\$37,097 - \$47,700		
	7 people	\$37,097 - \$51,000		
	8 people	\$37,097 - \$54,300		