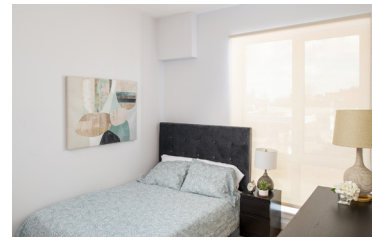




# 50 Penn



## Brooklyn, New York

### Studio, One-, Two-, & Three-Bedroom Apartments

50 Penn is a mixed-income, transit-oriented community in the Cypress Hills neighborhood of Brooklyn. The nine-story multifamily building contains 218 residences, including studios, one-bedrooms, two-bedrooms, and three-bedrooms. The sustainable community includes green roofs, rooftop photovoltaic panels, and a highly-insulated exterior wall system for energy efficiency. You'll also enjoy convenient shopping with a Fine Fare Supermarket right on the ground floor, along with other retail options and essential services nearby.

### COMMUNITY AMENITIES:

- Large outdoor terrace and inviting community lounge
- Fitness center for resident use
- On-site laundry facilities and bicycle storage
- Secured access entry
- Professionally landscaped outdoor spaces
- On-site professional management team and supportive services
- Service-oriented maintenance with 24-hour emergency call service
- All prospective new residents receive in depth and standardized credit, criminal, and landlord background screening through a third-party reporting agency.

### RESIDENCE FEATURES:

- Modern kitchen including electric range and dishwasher
- Energy efficient stainless steel appliances
- Central A/C
- Resident is responsible for electric and cable.

### APPLY HERE:



### Contact Us:

50 Pennsylvania Avenue | Brooklyn, NY 11207  
T: 347-657-6018 | F: 1 (844) 467-0657 | TTY: 711  
E: [50-penn@prontohousing.io](mailto:50-penn@prontohousing.io)

[50PennApts.com](http://50PennApts.com)

\*Income Restrictions Apply

**PENNROSE**  
Bricks & Mortar | Heart & Soul



## PROGRAMS AND ELIGIBILITY

Program requirements are specific to the property and individual unit. Eligibility for programs depends on several factors including: the number of people in the household, the total annual household income, credit and criminal background screening, and other criteria. 50 Penn offers the following rent programs: Low-Income Housing Tax Credit (LIHTC)

## HOW TO APPLY

Complete the online application available at [50PennApts.com](http://50PennApts.com). A non-refundable \$25 application fee per adult household member (including live-in aide) is required.

If there is an available unit that your household qualifies for, you will be contacted to schedule an application interview. Please plan to bring the following:

- Social Security Card(s) for each household member.
- Original Birth Certificate(s) for each household member.
- Addresses of your employer, bank, Social Security Office, and all other information pertaining to income.

If there are no units currently available that your household qualifies for, you will be mailed a Confirmation of Pre-application via U.S. Mail and placed on the property's waiting list. You will be contacted when a unit that your household qualifies for becomes available.

Upon receipt of the Application, credit, criminal, and landlord screening will be processed.

## INCOME LIMITATIONS & RENTS

(Effective 8/2025 and subject to change)

| Unit Size | Household Size | Qualifying Household Income Range | % AMI | Monthly Rent     |
|-----------|----------------|-----------------------------------|-------|------------------|
| Studio    | 1 person       | \$54,514 - \$68,040               | 60%   | \$1,590- \$2,406 |
| 1 Bedroom | 1 person       | \$58,114 - \$68,040               | 60%   | \$1,695- \$2,511 |
|           | 2 people       | \$58,114 - \$77,760               |       |                  |
| 2 Bedroom | 2 people       | \$69,154 - \$77,760               | 60%   | \$2,017- \$2,780 |
|           | 3 people       | \$69,154 - \$87,480               |       |                  |
|           | 4 people       | \$69,154 - \$97,200               |       |                  |
| 3 Bedroom | 3 people       | \$79,371 - \$87,480               | 60%   | \$2,315- \$3,465 |
|           | 4 people       | \$79,371 - \$97,200               |       |                  |
|           | 5 people       | \$79,371 - \$105,000              |       |                  |
|           | 6 people       | \$79,371 - \$112,800              |       |                  |