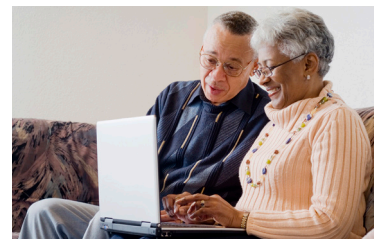




## Allentown Center Square



## Allentown, Pennsylvania

### Studio & One-Bedroom Apartment Homes

At Allentown Center Square, you'll find an apartment home for seniors 62+ in the center of downtown Allentown designed with your needs in mind. This unbeatable location with the local amenities and attractions of the Allentown Arts Walk just steps from your door will allow you to live the active, exciting life you desire! Located in the restored Allentown National Bank Building and just steps from healthcare, shopping and transportation, Allentown Center Square puts you close to the places you want to be.

### COMMUNITY AMENITIES:

- Updated laundry facilities with Smart Card system
- Abundant historic charm and character
- Inviting community rooms
- Computer lab for resident use
- Health and fitness area
- Free resident parking in municipal parking garage
- On-site management
- On-site maintenance with 24-hour emergency call service
- All prospective new residents receive in depth and standardized credit, criminal, and landlord background screening through a third-party reporting agency.

### RESIDENCE FEATURES:

- Open floor plans with high ceilings and oversized windows
- Fully equipped kitchens with dishwasher and garbage disposal
- Ceramic tiled baths
- Individually controlled heating and cooling
- Grab bars in bathrooms and emergency pull-cord system
- Security door entry system
- Resident is responsible for gas, electric and cable.

### Contact Us:

15 North 7th Street | Allentown, PA 18101

T: 610.365.4935 | F: 610.439.0576 | TDD: 800.545.1833 x647

E: AllentownCenter@Pennrose.com

AllentownCenterSquare.com

Leasing Office Hours: Monday to Friday, 8:30 am- 5:00 pm

## PROGRAMS AND ELIGIBILITY

Program requirements are specific to the property and individual unit. Eligibility for programs depends on several factors including: the number of people in the household, the total annual household income, credit and criminal background screening, and other criteria. The following rent programs are offered: Low-Income Housing Tax Credit, HOME Program

## HOW TO APPLY

Complete the property Pre-application, available on the website or in person. Please contact the office if you would like a Pre-application emailed or mailed to you.

Return the completed, signed, and dated Pre-application to the property via mail, email, fax, or in person. Depending on the unit you qualify for, a non-refundable \$25 application fee per adult household member may be required.

If there is an available unit that your household qualifies for, you will be contacted to schedule an application interview. Please plan to bring the following:

- Social Security Card(s) for each household member.
- Original Birth Certificate(s) for each household member.
- Addresses of your employer, bank, Social Security Office, and all other information pertaining to income.

If there are no units currently available that your household qualifies for, you will be mailed a Confirmation of Pre-application via U.S. Mail and placed on the property's waiting list. You will be contacted when a unit that your household qualifies for becomes available.

Upon payment of the Application Fee, credit, criminal, and landlord screening will be processed.

## INCOME LIMITATIONS & RENTS

(Effective 5/21 and subject to change)

Unit Size	Household Size	Qualifying Household Income Range	% AMI	Monthly Rent
Studio	1 person	\$14,790 - \$22,960	40%	\$493
	2 people	\$14,790 - \$26,240		
1 Bedroom	1 person	\$14,670 - \$22,960	40%	\$519
	2 people	\$14,670 - \$26,240		
	1 person	\$20,160 - \$28,700	50%	\$672
	2 people	\$20,160 - \$32,800		
	1 person	\$20,160 - \$34,440	60%	\$672
	2 people	\$20,160 - \$39,360		